



DATA SHEET

# SECTOR 60-2.4GHZ

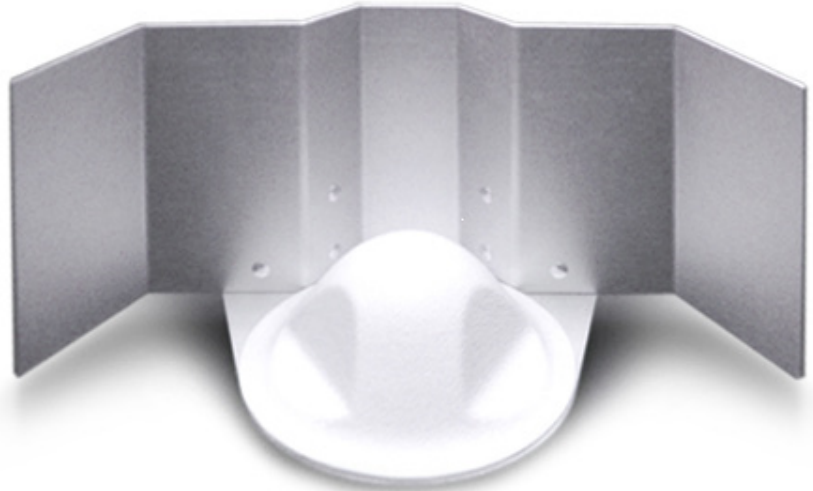
MULTI-POLARIZED HIGH GAIN DIRECTIONAL ANTENNA

MODEL NO:

**08-ANT-0868**

MP Antenna, LTD.  
7887 Bliss Parkway  
North Ridgeville, Ohio 44039

877 678 3243 *phone*  
877 678 3245 *fax*  
sales@mpantenna.com  
www.mpantenna.com



## Product Overview

The Multi-Polarized Sector 60-2.4GHz is constructed of UV stabilized polymers and high grade aluminum for extremely long service life in the most demanding conditions. With a 60° directional pattern it provides exceptional 12dBi high gain effective power and is ideal for indoor and outdoor deployments where a sectorized approach is required to accommodate clients in a variety of points. Weighing only 10 oz, the Sector 60-2.4GHz can easily be mast or wall mounted with available mounting hardware. Multi-Polarized antenna technology provides unequalled wireless communication in “Real World” obstructed non-line-of-sight (NLOS) environments. For ultimate performance use MP Antennas to further improve connectivity, throughput and network performance on all wireless devices.

## Features

- Multi-Polarized
- Obstruction Penetrating Send and Receive
- Enhanced Connectivity and Throughput
- Built In Spatial Diversity
- Excellent F/B (28 dB)
- Light Weight/Low Wind Load
- Mounting Hardware Included
- RoHS Compliant
- Weatherproof

## Applications

- 2.4GHz ISM Band Applications
- 802.11 b,g,n Wireless Systems
- Point-to-Point and Multipoint Systems
- Wireless Broadband Systems
- WiFi Access Point, Router, Bridge, CPE
- Building Penetration and High Obstruction Deployments



DATA SHEET

# SECTOR 60-2.4GHZ

MULTI-POLARIZED HIGH GAIN DIRECTIONAL ANTENNA

MODEL NO:

**08-ANT-0868**

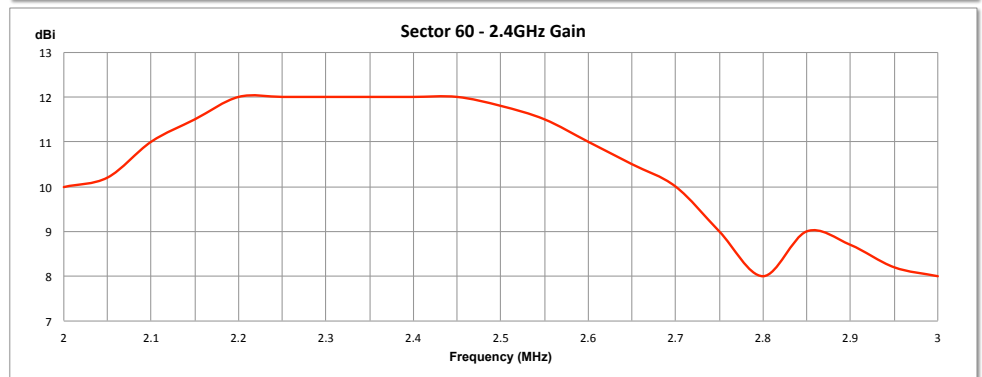
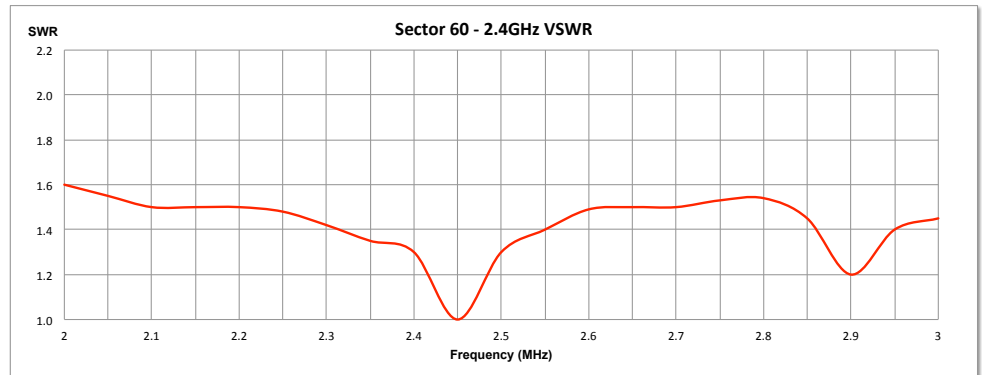
PART NUMBERS AND  
AVAILABLE CONNECTORS:

**08-ANT-0868-MAST**

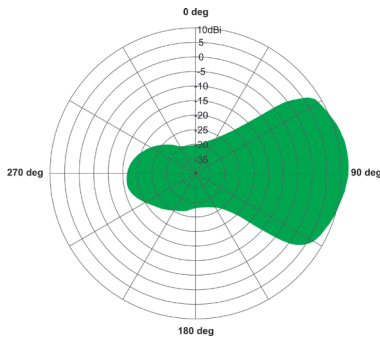
SECTOR 60-2.4GHZ W/MAST MOUNT

**08-ANT-0868-WALL**

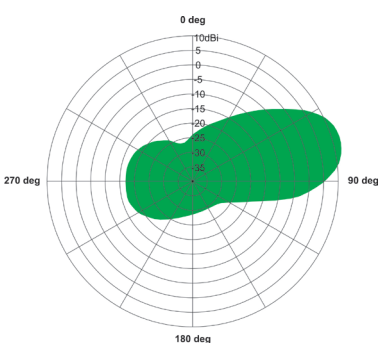
SECTOR 60-2.4GHZ W/WALL MOUNT



Azimuth Coordinate Pattern



Elevation Coordinate Pattern



MP Antenna, LTD.

7887 Bliss Parkway

North Ridgeville, Ohio 44039

877 678 3243 phone

877 678 3245 fax

sales@mpantenna.com

www.mpantenna.com

## Physical Specifications

- Width: 9 in
- Depth: 6 in
- Height: 4 in
- Weight: 10 oz
- Connector: SMA-Female
- Mounting: Mast Mount (1 1/4" - 2" Dia) or Wall Mount
- Construction: UV Stabilized Polymers, High Grade Aluminum
- Warranty: One year limited

## Typical Performance

- Frequency Range: 2-2.7GHz
  - Gain: 12dBi\*
  - VSWR: 1:1-1.5:1
  - Polarization: Multi-Polarized
  - Power: 50 Watts Input
  - Input: 50 ohms nominal
- \* With built in spatial and polarization diversity, performance in obstructed environments is greater than that of standard antennas with similar or higher laboratory gains.

rethink the antenna™

MP Antenna reserves the right to change product information and specifications without notice. Responsibility for the use and application of MP Antenna products rests with the end user since MP Antenna cannot be aware of all potential uses. MP Antenna makes no warranties as to the fitness, merchantability, or suitability of any MP Antenna products for any specific or general uses. MP Antenna shall not be liable for incidental or consequential damages of any kind. Copyright © 2009 MP Antenna Ltd. All rights reserved.